



**TE AROHA COLLEGE**

**Course Selection Guide**

**Year 11**

**NCEA Level 1**

**2024**

# Te Aroha College Graduate Profile

---



**Students of Te Aroha College are our future, they will be confident, connected, well rounded and have a clear future direction. They will have pride, purpose and flexibility. They will seek excellence and excel locally, nationally and internationally in their chosen strengths. They will be culturally aware and demonstrate tolerance, respect and understanding and will go out into the world and sustainably take responsibility for themselves and those who rely on them.**

---

Choosing your Level 1 NCEA Course deserves careful thought and consideration. Our aim is to provide you with subjects you are interested in, which will benefit you in future years, and support your chosen career and employment or lead you to further academic study.

This Course Selection Guide provides you with outlines for Level 1 NCEA courses which will probably be offered through timetabled classes in 2024. Courses will only go ahead with sufficient numbers; others can be taken through the Te Kura Correspondence School.

**Every student must complete Preliminary Course Selection by Thursday 8 September:**

- ◇ **Online using the website – <https://tearoha.schoolpoint.co.nz>**
- ◇ **The Link is also on school website: <https://tearoha.school.nz>**
- ◇ **Students sign in with student username and password**
- ◇ **Those without internet access should complete at school**

**Students will be given allocated school time on Thursday 8 September if not already completed.**

**Students' Course Selection will be finalised in consultation with their Dean.**

## **Year 11 Students in 2024 take six subjects in total**

---

- You must take compulsory English at Level 1
- You must take compulsory Maths at Level 1
- You must take compulsory Science at Level 1
- Choose three additional subjects

Before you select your subjects there is important information you need to know:

### **Types of Assessments**

---

At Level 1 there are three types of assessments.

- Internal assessments are sat in class. The due date is set by the classroom teacher. The work is marked by the classroom teacher. Work submitted after the due date may only be accepted if strict criteria are met.
- Common Assessment Tasks are sat in class within an allocated assessment time frame. This may be in one session, over a few days, or a week. The dates to submit work are set by NZQA. There is no opportunity for assessments to be completed at another time. The work is forwarded to NZQA and marked by NZQA.
- External Exams are sat at the end of the year. Exam dates are set by NZQA. Should the student be unable to attend the exam due to emergency, the student may apply to NZQA for a Derived Grade.

### **Literacy and Numeracy Corequisites**

---

The Literacy and Numeracy Corequisites are usually offered in Year 10 but may be attempted at any year.

There are two assessment opportunities each year which are sat on-line under exam conditions.

All three unit standards must be achieved before Level 1, Level 2 or Level 3 NCEA Certificates are awarded.

- Literacy Co-requisites
  - Reading 5 credits
  - Writing 5 credits
- Numeracy Co-requisites
  - Numeracy 10 credits

## **Excellence and Merit Endorsements**

---

Students must gain 50 Achievement Standard credits at Merit or Excellence level to receive an overall Level Endorsement.

Students must gain at least 14 credits at Merit or Excellence, including at least 3 credits from internal and external assessments to receive a Subject Endorsement.

## **Te Aho o Te Kura Pounamu - Correspondence School**

---

Students wishing to take a subject not currently being offered, or if there are insufficient numbers to form a class, may complete a dual enrolment with the Correspondence School, *Te Aho o Te Kura Pounamu*, at no cost. Please contact Ms Scott ([rscott@tacol.nz](mailto:rscott@tacol.nz)) to discuss this option. Only students with a demonstrated independent work ethic are considered.

# Vocational Pathways and Course Selection

---

National career indicators are clearly advising that future job markets are rapidly evolving and students need to be immersed in a culture of adaptability when career planning.

The Vocational Pathways structure was designed to link secondary education to tertiary study in a rapidly changing work environment. Vocational Pathways helps you to see how your strengths and achievements relate to future study options and job opportunities. The pathways provide clear indication of where a subject fits into the real world, and what is valued by employers.

The pathways cover six broad industry sectors:

- Manufacturing and technology
- Construction and infrastructure
- Creative industries
- Primary industries
- Social and community services
- Services industries

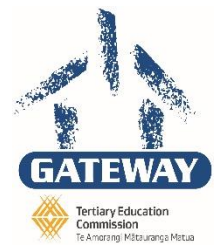


When you are selecting your courses you should consider how the subject programmes relate to your intended vocational pathway.

# Gateway / Work Readiness Programme

---

The Gateway team offers a cohesive strategy for supporting our students to make considered career choices. Gateway is offered to Year 12 and 13 students as a vocational pathway into the workforce. The Gateway programme consists of:



- a work experience placement for a half day once a week
- the completion of 20 credits in class (in Gateway class or another industry-relevant class)
- additional specialist courses

**Please note: Students can take a Gateway placement without enrolling in a timetabled Gateway Support class.**

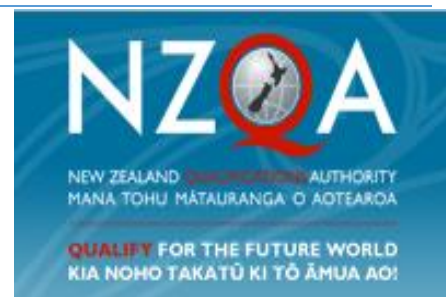
Gateway and work experience placements, as well as relevant units of work, are organised by the Gateway co-ordinator Mrs Sarah Verran-Tye ([sverran-tye@tacol.nz](mailto:sverran-tye@tacol.nz)).

During the year, courses are offered to Gateway students as a priority, and then to all Year 12 and 13 students if places are available. These may include:

- First Aid
- Health and Safety
- Leadership
- Security
- Scaffolding
- Drivers' Licences
- Forklift operation and licences

## Special Assessment Conditions or SAC

NZQA recognises that some students have learning or medical needs which require Special Assessment Conditions (SAC) during NZQA assessments. This can provide students with a reader or writer, use of a computer, a separate room, additional time, rest breaks, braille paper or large print. SACs apply to internal assessments sat during the year, Common Assessment Tasks and External Exams at the end of the year. For example, a student with dyslexia could be provided with assistance to read the exam questions, write down answers, or a computer to type answers. A student with anxiety, ADHD, epilepsy or diabetes could sit their exam in a separate room and have rest breaks.



NZQA's process to obtain SAC is changing in 2024. Te Aroha College still notifies NZQA of students requiring SAC, but more information detailing exactly what will be required will be formalised at the beginning of 2024.

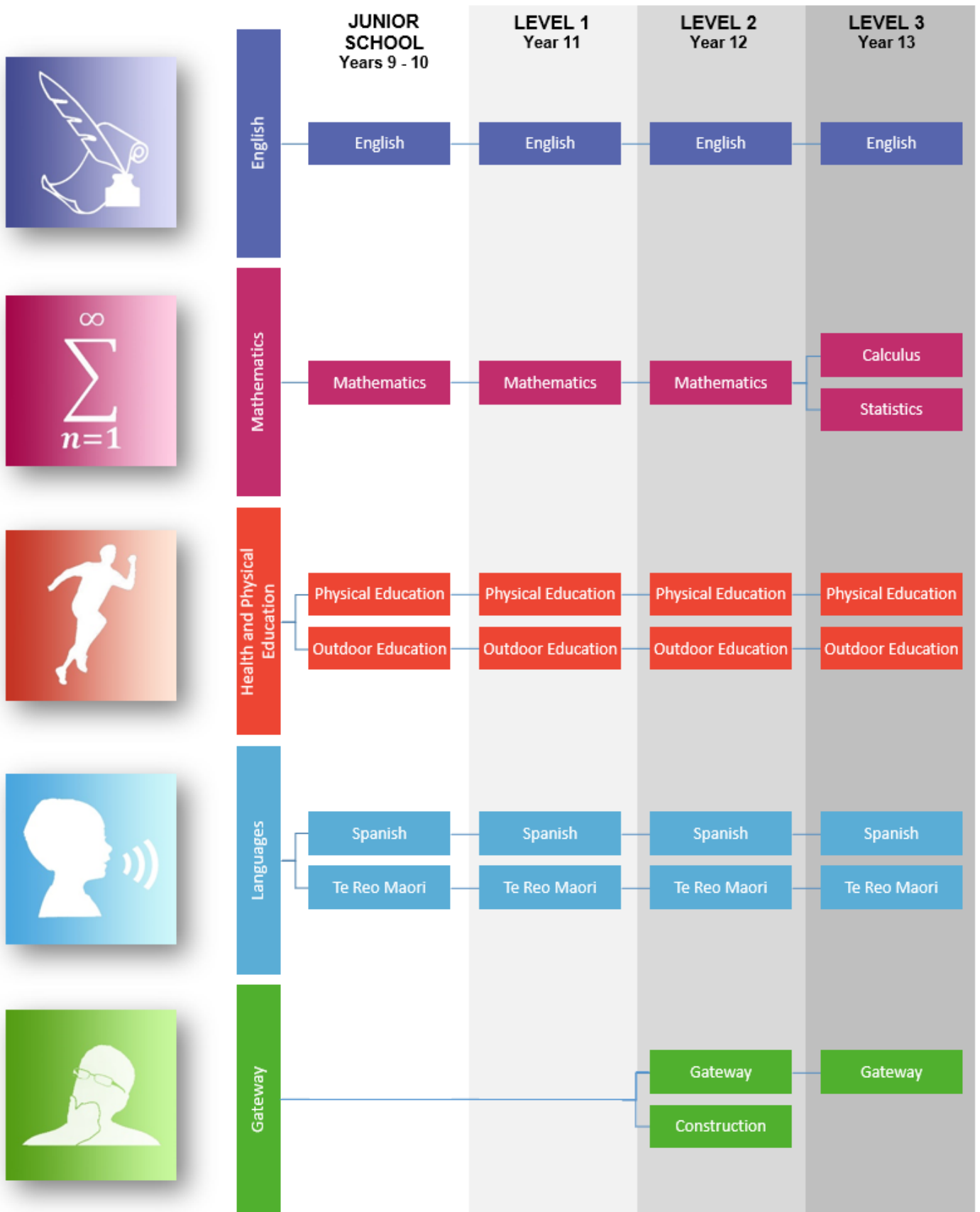
In the meantime, if you would like to know more about obtaining SAC for your child, please contact Rachel Scott ([rscott@tacol.nz](mailto:rscott@tacol.nz)), Principal's Nominee for NZQA, in the first instance. From there you may be referred to other staff members for assistance.

SACs do not cover students who have a sudden illness or injury, for example a broken arm just before exams. This is covered by the Derived Grade and Practice Exam process.

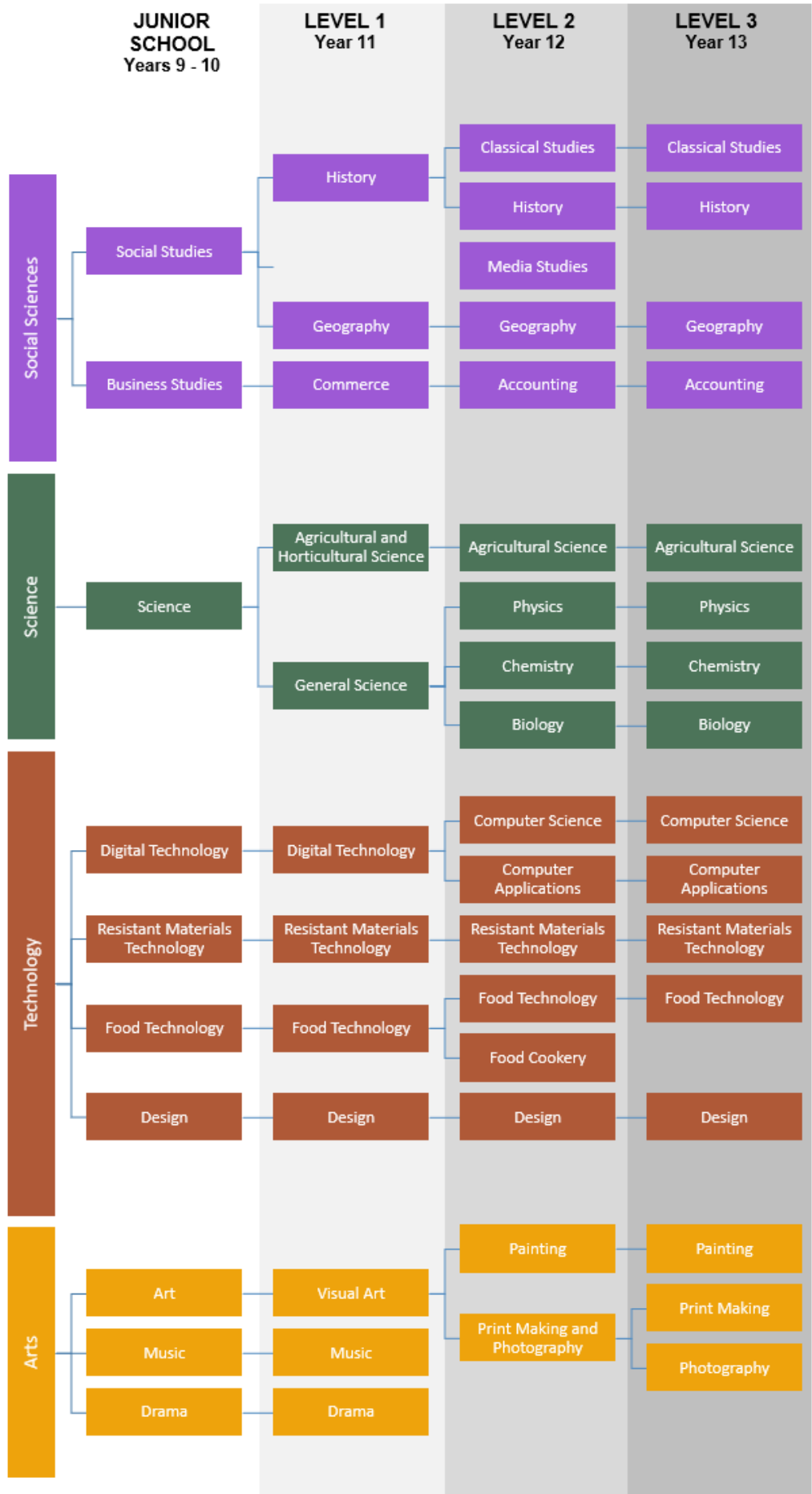
This link takes you to NZQA's SAC information <https://www.nzqa.govt.nz/providers-partners/assessment-and-moderation-of-standards/managing-national-assessment-in-schools/special-assessment-conditions/>

# Subject Map

This Subject Map will help you chart your subject selections from Year 9 to Year 13.







*The following three subjects are compulsory:*

**ENGLISH, MATHS, SCIENCE**

Select English **AND** Maths

Select General Science **OR** Agriculture & Horticulture

**Course Title** English L1 (11ENG)  
**Pre-Requisites** Successful completion of Year 10 English  
**Course Costs** \$20 for Course Book

Std No	Standard Title	Type of Assessment	Credits
91925	Demonstrate understanding of specific aspects of studied text	Internally assessed	5
91926	Develop ideas in writing using stylistic and written conventions	Common Assessment Task	5
91927	Demonstrate understanding of significant aspects of unfamiliar texts	External Exam	5

Course Highlights: Developing critical thinking and writing skills and applying these to written texts, visual texts and film. Creating your own writing and static images. This course supports all areas where literacy is important. Students will be placed in the most appropriate English class depending on their achievements in Years 9 and 10.

Vocational Pathway: Manufacturing and Technology, Construction and Infrastructure, Creative Industries, Primary Industries, Social and Community Services, Services Industries.

This course can lead to: increasing competency in literacy, increasing enjoyment of reading, writing and speaking. Leads to academic courses in Years 12 and 13, depending on achievement.

For more information, please see the Head of English, Ms Scott or your Year 10 English teacher.

**Course Title: Mathematics L1 (11MATHS)**

Pre-Requisites None

Course Costs \$20

Std No	Standard Title	Type of Assessment	Credits
91944	Explore data using a statistical enquiry process	Internally assessed	5
91945	Use mathematical methods to explore problems that relate to life in Aotearoa New Zealand or the Pacific	Internally assessed	5
91946	Interpret and apply mathematical and statistical information in context	Common Assessment Task	5
91947	Demonstrate mathematical reasoning	External Exam	5

Course Highlights: The Year 11 Mathematics course will provide an opportunity for students to gain up to 20 credits towards their Level 1 NCEA certificate. Students will be placed into mathematics classes based upon their results at Year 10. Students who have not yet gained their numeracy credits will be provided the opportunity to gain their Level 1 numeracy when the Common Assessment Tasks are held.

Vocational Pathway: Creative industries, Primary industries, Social and Community Services, Services industries, Manufacturing and Technology, Construction and Infrastructure.

This course can lead to: Year 12 Mathematics.

For more information, please see Head of Maths, Mr Darby

## Science at Level 1 splits into two courses: **General Science** and **Agriculture & Horticulture**

Students who are considering taking Physics, Chemistry or Biology at Levels 2 and 3 should select **General Science**. This can prepare them to take any of the Sciences at levels 2 and 3, including Biology and Agriculture. Students will take a selection of internal and external standards worth up to 20 credits from the available standards in the Science curriculum area. The standards offered will be on a class-by-class basis at the discretion of the Head of Science, Mr Kurian.

Students who are considering taking Agriculture & Horticulture at Levels 2 and 3 should select **Agricultural & Horticulture**. Agricultural & Horticulture will consist of two externally assessed Achievement Standards, with two internally assessed standards.

**Course Title**            **General Science L1 (11SCI)**

**Pre-Requisites**        Year 10 Science

**Course Costs**         \$30

This is an example of a course structure offered in Year 11 General Science:

Std No	Standard Title	Type of Assessment	Credits
92044	Demonstrate understanding of human-induced changes within the Earth system	Internally assessed	5
92045	Demonstrate understanding of a physical phenomenon through investigation	Internally assessed	5
92021	Demonstrate understanding of a chemical reaction in a specific context	Internally assessed	5
92047	Demonstrate understanding of energy in a physical system	External Exam	5

**Course Highlights:** A combination of 3 to 4 standards from all the Science disciplines which gives the students a good understanding of Science. This class leads to the study of individual Science subjects at Year 12. General Science - Level 1 focuses on the requirements of Level 2 Science and must be taken by students who are considering taking Physics, Chemistry or Biology in Year 12.

**Vocational Pathway:** Primary industries, Social and Community Services, Services industries, Manufacturing and Technology, Construction and Infrastructure.

This course can lead to: Year 12 studies in any combination of Physics, Chemistry & Biology.

For more information, please see Head of Science Mr Kurian, or your Year 10 Science teacher.

**Course Title            Agricultural and Horticultural Science (11AGR)**

Pre-Requisites        Year 10 Science

Course Costs            \$30

Std No	Standard Title	Type of Assessment	Credits
91928	Demonstrate understanding of a life process and how it is managed in a primary production system	Internally assessed	5
91929	Demonstrate understanding of factors that influence life purpose and location of primary production	Internally assessed	5
91931	Demonstrate understanding of sustainability considerations that influence primary production management practices	Common Assessment Task	5
91930	Demonstrate understanding of how soil properties are managed in a primary production system	External Exam	5

Course Highlights: Gaining knowledge of plants and their cultivation with a biological context. Gaining knowledge of farm animal biology and associated reproductive, health and social issues.

Vocational Pathway: Primary industries, Biological Sciences.

This course can lead to: Year 12 studies in Agriculture and Horticulture, livestock management, primary industries, horticultural industries, vocational biology, and science courses.

For more information, please see Head of Science Mr J Kurian, or your Year 10 Agriculture teacher.

# THE FOLLOWING COURSES ARE OPTIONAL

## STUDENTS SHOULD SELECT THREE

### COMMERCE

<b>Course Title</b>	<b>Level 1 Commerce</b>
Pre-Requisites	None
Course Costs	\$20 workbook

Std No	Standard Title	Type of Assessment	Credits
92028	Demonstrate understanding of an organisation's financial decision making	Internally assessed	5
92029	Demonstrate understanding of price determination for an organisation	Internally assessed	5
92031	Demonstrate understanding of how an organisation's financial viability is affected by an event	Common Assessment Task	5
92030	Demonstrate understanding of how interdependent relationships are affected by an event	External Exam	5

Course Highlights: Commerce is the use and exploration of accounting, economic, and business studies concepts and models to make sense of society and solve problems. In this subject, students will build knowledge, skills, and values they need to know to navigate, and participate in the economic world. They will learn how participants in the economic world make decisions and will analyse how these decisions impact sustainability.

Students will have the opportunity to gain up to 20 credits in this course.

Vocational Pathway: Creative industries, Primary industries, Social and Community Services, Services industries.

This course can lead to: Level 2 Accounting.

For more information, please see Teacher in Charge of Commerce Mr S Darby, or your Year 10 Business Studies teacher.

# ARTS

## VISUAL ART, DANCE, DRAMA, MUSIC

<b>Course Title</b>	<b>Visual Art L1 (Art11)</b>
Pre-Requisites	Year 10 Art or approval from HOD
Course Costs	\$80 equipment & materials fee, \$30 for possible Art Trip (tbc)

Std No	Standard Title	Type of Assessment	Credits
91912	Use practice-based visual inquiry to explore Aotearoa New Zealand's Māori context and another cultural context.	Internally assessed	5
91914	Explore Visual Arts processes and conventions to inform own art making	Common Assessment Task	5
91915	Create a sustained body of related artworks in response to an art making proposition	Externally assessed tbc	5

Course Highlights: Explore your personal creative identity using hands-on drawing, painting and printmaking. You will be inspired by expressive and colourful artworks by New Zealand artists as you explore youth identity in Te Aroha.

Vocational Pathway: Creative Industries.

This course can lead to: Level 2 Painting or Photo/Print. Exciting creative careers such as Artist, Illustrator, Photographer, Gallery Owner, Architect, Fashion Designer, Interior Designer, Film Director, Film or TV Production, Advertising Designer, Media Designer, Art Teacher, Art Therapist.

For more information, please see Teacher in Charge of Visual Arts, Ms Baylis.

**Course Title**      **Dance L1 (Dance11)****Pre-Requisites**      Students will have an interest in Dance Choreography and the confidence to perform for an invited audience**Course Costs**      \$30 to see a professional Dance troupe perform in Tauranga or Hamilton (tbc)

Std No	Standard Title	Type of Assessment	Credits
91936	Compose a Dance Sequence in Response to a Given Brief	Internally assessed	5
91937	Perform Dance Sequences	Internally assessed	5
<i>Optional</i>			
91939 Optional	Demonstrate Understanding of the Elements of Dance in Performance	External Exam	5

Course Highlights: Students will create their own dance sequences. They will also perform two dances using two different styles of dance to an invited audience. Students will have the option of participating in a Dance exam. This exam would require a high level of literacy to unpack the use of Dance elements found in a recording of a dance created by professional dancers.

Vocational Pathway: Creative Industries.

This course can lead to: Level 2 Dance, a career in performance and teaching.

For more information, please see Head of Arts, Ms Hagan.



**Course Title**      **Drama L1 (Drama11)**

**Pre-Requisites**      Students need to be able to manage themselves and relate to others well. It would be helpful if students enjoyed Year 9 Drama and/or if they have been involved in school plays or productions or Showquest.

**Course Costs**      \$30 to see a professional Drama troupe perform in Tauranga or Hamilton (tbc)

Std No	Standard Title	Type of Assessment	Credits
91940	Explore the functions of theatre Aotearoa	Internally assessed	5
91941	Participate in creative strategies to create a drama	Internally assessed	5
91942	Use drama techniques to perform a scripted role for an audience	Common Assessment Task	5

**Course Highlights:** Performing in a class scripted play. Working with the 2024 school production “Little Shoppe of Horrors” either onstage or backstage. Creating student’s own piece of theatre. Seeing a live show by professional actors.

**Vocational Pathway:** Creative Industries.

This course can lead to: Level 2 Drama, a career in performance, stage technologies, costume and prop creation, film, TV, journalism, marketing, Communications and Public Relations, teaching, Police, social work, politics, law.

For more information please see Head of Arts, Ms Hagan.

**Course Title: Music L1 (11MUSIC)**

Pre-Requisites: A demonstrated interest and ability in music as well as an independent work ethic

Course Costs: Nil

NCEA Music is only offered through the Correspondence School, *Te Aho o Te Kura Pounamu*.

An individual programme will be arranged for you which may include practical and theory based NCEA assessments.

Std No	Standard Title	Type of Assessment	Credits
91948	Use music skills in a music style	Internally assessed	5
91949	Demonstrate performance skills	Internally assessed	5
91950	Demonstrate understanding of music in relation to contexts	Common Assessment Task	5
91951	Shape music ideas to create an original composition	Common Assessment Task	5

Vocational Pathway: Creative Industries.

For more information, please see Teacher in Charge of Music, Mrs Pipe or Ms Scott.

# HEALTH, OUTDOOR EDUCATION, PHYSICAL EDUCATION

## OUTDOOR EDUCATION, PHYSICAL EDUCATION

**Course Title:** Physical Education L1 (11PE)

**Pre-Requisites:** HoD Approval

**Course Costs:** \$30

Std No	Standard Title	Type of Assessment	Credits
92016	Apply movement strategies in an applied setting	Internally assessed	5
92017	Demonstrate understanding of how Kotahitanga is promoted in movement through the application of strategies	Internally assessed	5
92018	Demonstrate understanding of the influence of a personal movement experience on hauora	Common Assessment Task	5

**Course Highlights:** Physical Education covers the topics of anatomy, biomechanics, exercise physiology, team games and motor skill learning using an applied learning context. You will have the opportunity to take a range of the standards listed above in a personalised learning programme at the discretion of the Head of Health and Physical Education, Mr Aislabie.

**Vocational Pathway:** Primary Industries, Social and Community Services, Services Industries.

This course can lead to: Level 2 course; Careers as a Teacher, Nurse, Personal Trainer, Group Fitness Instructor, Army, Navy, Police, Ambulance Officer, Coach, Physiotherapist, Health Sciences, and Trainer.

For more information, please see Head of Health & PE, Mr Aislabie.

**Course Title: Outdoor Education L1 (11OED)**

Pre-Requisites: HoD Approval

Course Costs: \$100

Std No	Standard Title	Type of Assessment	Credits
US20137	Mountain bike on easy to intermediate terrain	Internally assessed	2
US 457	Mountain Bike on intermediate to expert terrain	Internally assessed	2
US20138	Select, set up and maintain a mountain or cycle touring bike	Internally assessed	2
US 20817	Demonstrate mountain biking skills on grade 3 terrain	Internally assessed	2
92019	Demonstrate understanding of influences on movement in Aotearoa New Zealand or the Pacific	Common Assessment Task	5

Course Highlights: Outdoor Education offers a range of outdoor activities, potentially including mountain biking at Te Miro Mountain Biking Park, Morrinsville and Cougar Mountain Biking Park, Tokoroa, a range of local tramps, and snorkelling.

Vocational Pathway: Social and Community Services, Services Industries.

This course can lead to: Level 2 course. Careers in areas such as Outdoors Instructor, Guide and Teacher.

For more information, please see Head of Health & PE, Mr Aislabie.

# LANGUAGES

## SPANISH, TE REO MAORI

**Course Title** Spanish L1 (SPA11)

**Pre-Requisites** Level 1 Spanish is available to Year 11, 12, and 13 students. Preferably have studied Year 9 or Year 10 Spanish, or in consultation with the Teacher of Spanish

**Course Costs** \$30 Language Perfect Website subscription (optional)

Std No	Standard Title	Type of Assessment	Credits
91972	Interact in Spoken Spanish to share and respond to information, ideas, and opinions	Internally assessed	5
91973	Communicate in Spanish for a chosen purpose	Internally assessed	5
91974	Demonstrate understanding of written Spanish related to everyday contexts	External Exam	5
91975	Demonstrate understanding of Spoken Spanish related to everyday contexts	External Exam	5

**Course Highlights:** Spanish is a significant language in the world that is becoming both important and popular in New Zealand to learn. It is of special importance to New Zealand trade as it is a major language in Latin American countries. This course focuses on the four communicative skills of listening, speaking, reading, and writing, in familiar contexts. Students will become confident enough to seek out opportunities and use Spanish. The course will highlight various cultures of Spanish-speaking countries.

**Vocational Pathway:** Creative Industries, Social and Community Services, Services Industries.

This course can lead to: Level 2 course. AFS Scholarships to live in a Spanish Country, greater job opportunities in: tourism, commerce, diplomacy, teaching, journalism or any career of your choice. Knowing Spanish will also help with learning specialist scientific vocabulary.

For more information, please see Teacher in Charge of Spanish, Ms Gemmell.

**Course Title**            **Te Reo Māori L1 (TEREO11)**  
**Pre-Requisites**        Year 10 Te Reo Māori  
**Course Costs**            Potential trip to Koroneihana, Kapa Haka Festivals, Whare Taonga - \$80 (tbc)

Std No	Standard Title	Type of Assessment	Credits
92092	Te Kōrero mō te ora o te reo i rua i te tau 1970	Internally assessed	6
92093	Te whakapuaki whakaaro i runga i te āta rere o te reo	Internally assessed	4
92094	Te tautohu i ētahi mātāpuna Māori kei roto i te reo	Common Assessment Task	6
92095	Te whakapuaki whakaaro i runga i te tika haere o te reo	External Exam	4

**Course Highlights:** This course allows akonga to explore and identify historical factors that had an impact on the vitality of Te Reo Māori from the perspective of a person who lived through that time. This course will provide the opportunity for students to build their confidence in conversing in the language.

**Vocational Pathway:** Social and Community Services, Creative Industries, Primary Industries, Service Industries, Construction and Infrastructure.

This course can lead to: Level 2 Te Reo Māori, Iwi Liaison Officer, Lawyer, Cultural Advisor, Doctor, Kaikōrero, Kaikaranga.

For more information, please see Teacher in Charge of Te Reo, Whaea Arleen McLaren.

# SOCIAL SCIENCE

## GEOGRAPHY, HISTORY

<b>Course Title</b>	<b>Geography L1 (GEO11)</b>
Pre-Requisites	None
Course Costs	Potential field trip costs tbc

Std No	Standard Title	Type of Assessment	Credits
91932	Demonstrate understanding of the spatial distribution of phenomena and its impacts within te taiao	Internally assessed	5
91933	Explore te taiao using data	Internally assessed	5
91934	Demonstrate understanding of how natural processes operate within te taiao	Common Assessment Task	5
91935	Demonstrate understanding of geographic decision making in Aotearoa or the pacific	External Exam	5

Course Highlights: Geography is the study of the natural world and the interconnections within. It teaches students how to look at issues and problems using differing perspectives or viewpoints. It develops an understanding of our local environment and the world, and teaches understanding of global issues and concerns.

Students will learn a range of geographic skills throughout the programme, including mapping, graphing, visual and field work skills.

Vocational Pathway: Creative Industries, Primary Industries, Social and Community Services, Services Industries.

This course can lead to: Level 2 and Level 3 Geography, university courses in Earth Science, Geology, Meteorology, Climatology, soil science.

For more information, please see Head of Social Sciences, Miss Halford.

**Course Title**            **History L1 (HIS11)**

Pre-Requisites        None

Course Costs         Potential field trip

Std No	Standard Title	Type of Assessment	Credits
92024	Engage with a variety of primary sources in a historical context	Internally assessed	5
92025	Demonstrate understanding of the significance of a historical context	Internally assessed	5
92027	Demonstrate understanding of perspectives on a historical context	Common Assessment Task	5
92026	Demonstrate understanding of historical concepts in contexts of significance to Aotearoa New Zealand	External Exam	5

Course Highlights: Students study a range of important historical events and movements in Level 1 History, both individually and as a class. The course will begin by examining differing examples of global and local social justice movements, such as the Civil Rights Movement in the USA, 1975 Māori Land March, the Polynesian Panthers etc. Students will also learn about the lasting impact of the Holocaust and international conflict case studies.

Level 1 History is an ideal subject for anyone who enjoys learning about the world and the people in it. History is dynamic and exciting. It can spark students' curiosity and imagination in the world around them and make them more aware of how society has been shaped by events of history. This awareness can ensure students go on to improve their future by understanding the past.

Students can learn to perfect the essential skills of critical thinking, essay writing, source analysis, research expertise, historiography, referencing methods, plus many other valuable skills throughout the course.

Vocational Pathway: Creative Industries, Social and Community Services, Service Industries.

This course can lead to: Level 2 and 3 History.

For more information, please see Head of Social Sciences, Miss Halford.



# TECHNOLOGY

## DIGITAL TECHNOLOGY, DESIGN TECHNOLOGY, FOOD TECHNOLOGY, RESISTANT MATERIALS TECHNOLOGY

**Course Title:** Digital Technology L1 (11DIGITAL)

**Pre-Requisites:** An interest in how computers work

**Course Costs:** \$10 Code Avengers account

Std No	Standard Title	Type of Assessment	Credits
92004	Create a computer programme	Internally assessed	5
92005	Develop a digital technologies outcome	Internally assessed	5
92006	Demonstrate understanding of usability in human-computer interfaces	Common Assessment Task	5
92007	Design a digital technologies outcome	Common Assessment Task	5

**Course Highlights:** Students will develop their ability to write computer code to the point that they will be able to write their own basic computer program through an iterative development process. If you like solving puzzles, then this is for you! Student learning will be supported by online learning tool of Code Avengers. Students will be able to implement basic procedures to produce a web outcome using HTML and CSS. During this process they will be developing their understanding of the concepts of computer science.

**Vocational Pathway:** Manufacturing and Technology, Services Industries, Social and Community Services, Creative Industries.

This course can lead to: Computer Science is a highly significant industry nationally and globally. A career in Computer Science can see you as one of the most sought after employees in the job market. Computer Scientists can work in anything from Architecture, Agriculture and Engineering to Programming, Networking and Web Design or other careers yet to be invented!

For more information, please see Teacher in Charge of Computer Science, Mr Daroux.

**Course Title:** Design Technology L1 (11DESIGN)

**Pre-Requisites:** Year 10 Design or Art

**Course Costs:** Nil

Std No	Standard Title	Type of Assessment	Credits
92000	Generate product or spatial ideas	Internally assessed	5
92001	Use techniques to communicate a design outcome	Internally assessed	5
92002	Develop design ideas informed by consideration of people	Common Assessment Task	5
92003	Use computer modelling to communicate a design outcome	External Exam	5

Course highlights: No exam. Assessment by folio submission. Computer modelling available. Student selected design topic/project based. Acceleration programme for suitable students. The course is project based to suit student interests, within the influence of the Hauraki Gulf.

Vocational Pathway: Manufacturing and Technology, Construction and Infrastructure, Creative Industries, Primary Industries.

This course can lead to: A wide range of careers. Level 2 course. Year 12 and 13 Design Scholarship.

For more information, please see Head of Technology & Design, Mr Pipe.

**Course Title:** Food Technology L1 (11FOODT)

**Pre-Requisites:** Nil

**Course Costs:** \$105

Std No	Standard Title	Type of Assessment	Credits
92012	Develop a Materials and Processing Technology outcome for an authentic context	Internally assessed	6
92013	Develop a Materials and Processing Technology outcome by transforming, manipulating, or combining different materials	Internally assessed	6
92014	Demonstrate understanding of sustainable practices in the development of a Materials and Processing Technology design	Common Assessment Task	4

**Course Highlights:** Students will learn about and understand the safe use of chosen materials, tools, and equipment whilst developing an outcome, consider the impact of the outcome on the end user(s). Students will be able to understand the importance of manaaki whenua (caring for the land) and manaaki tangata (caring for the people), as well as understanding and using, rangahau (research) to apply sustainable design thinking principles whilst developing and applying practical skills.

**Vocational Pathway:** Manufacturing and Technology, Construction and Infrastructure, Creative Industries, Services Industries.

This course can lead to: Preparing you for Food Technology at Level 2.

For more information, please see Teacher in Charge of Food Technology, Mr Rowe.

**Course Title**            **Materials and Processing Technology L1 (MPT11)**  
**Pre-Requisites**        Priority given to students who have completed Y10 Technology  
**Course Costs**            \$100

Std No	Standard Title	Type of Assessment	Credits
92012	Develop a Materials and Processing Technology outcome for an authentic context	Internally assessed	6
92013	Develop a Materials and Processing Technology outcome by transforming, manipulating, or combining different materials	Internally assessed	6
92014	Demonstrate understanding of sustainable practices in the development of a Materials and Processing Technology design	Common Assessment Task	4

**Course Highlights:** This L1 achievement standard course is offered for students interested in engineering, construction, or product design. Students gain material processing technology skills and knowledge through designing and making a project using a range of sustainable resistant materials such as metal, wood and recycled plastic.

**Vocational Pathway:** Manufacturing and Technology, Construction and Infrastructure, Primary Industries.

This course can lead to: School based Level 2 Materials Processing Technology course.

For more information, please see Teacher in Charge of Materials Technology, Mr Ashford-Beck.

**USE THIS PAGE FOR YOUR OWN NOTES:**

**USE THIS PAGE FOR YOUR OWN NOTES:**

**USE THIS PAGE FOR YOUR OWN NOTES:**



**The following teaching staff are available  
should you have any questions:**

***Y11 Dean***

Danielle Gemmell [dgemmell@tacol.nz](mailto:dgemmell@tacol.nz)

***Y11 Form Teachers***

Aotea – Mrs D Jager [djager@tacol.nz](mailto:djager@tacol.nz)

Arawa – Ms J Baylis [jbaylis@tacol.nz](mailto:jbaylis@tacol.nz)

Tainui – Mr N Bridgland [nbridgland@tacol.nz](mailto:nbridgland@tacol.nz)

Tokomaru – Ms A Hagan [ahagan@tacol.nz](mailto:ahagan@tacol.nz)

**Whanau Form Teacher**

Whaea Arleen [amclaren@tacol.nz](mailto:amclaren@tacol.nz)

**Deputy Principal for Senior School**

Mr P Jager [pjager@tacol.nz](mailto:pjager@tacol.nz)

**NZQA, Te Kura & Special Assessment Conditions**

Rachel Scott [rscott@tacol.nz](mailto:rscott@tacol.nz)

Te Aroha College  
106 Stanley Ave  
Te Aroha 3320  
Phone: (07) 884 8625  
Email: [office@tacol.nz](mailto:office@tacol.nz)